

Activities Report

(April, 2023 to February, 2024)
State Medicinal Plants Board, Odisha,
Bhubaneswar.

Awareness Activities:

On 6th June 2023 SMPB, Odisha had celebrated one Pledge activity under Mission LiFE campaign, Ministry of AYUSH emphasizing mind full and deliberate utilization instead of mindless wasteful consumption of resources. This event was organized at the campus of MPKC Patrapada attended by Sj. Suddep Nayak, IFS,

Chief Executive, SMPB, Odisha, Smt. Asima Dash, Dy. Conservator of Forest, SMPB, Odisha and officials of SMPB along with field staff of MPKC Patrapada. During the Pledge ceremony the following Oaths were taken.



1. Promotion of consumption and cultivation of local medicinal plants.
2. Reducing the uses of non re-usable plastics.
3. Recycling of bio- wastage and housing wastages.

Training & Workshops:

On the morning of 3rd July 2023 we left for Bhawanipatna of Kalahandi district from Bhubaneswar through hired vehicle and reached Bhawanipatna at 6:15 PM of the same day. Upon reaching at Bhawanipatna we headed towards the training venue which was at the Red Cross Kalyan Mandap to overview the arrangements for the workshop which was scheduled to be held on 4th of July 2023 at 9:30



AM. After suggesting for some necessary modifications and arrangements to the Organizer we camped at Bhawanipatna.

At 9:30 AM of 4th July 2023, the registration of participants who were especially from the Farming & Traditional Healers' communities initiated and at 10:00 AM Shri Sudeep Nayak, IFS, the Chief Executive,



State Medicinal Plants Board, Bhubaneswar inaugurated the workshop. The Range Officers of Junagarh and Bhawanipatna Forest Ranges also attended the workshop. In this workshop 31 no of participants from Kalahandi Sadar, Kalampur, Bhawanipatna, Kesinga, Golamunda, M. Rampur, Utkela etc. had participated in this workshop.

Shri Sudeep Nayak, IFS, the Chief Executive, State Medicinal Plants Board, Bhubaneswar in his inaugural address narrated the participants on the importance of cultivation & consumption of Ashwagandha. He also narrated the huge increase in demand of Ashwagandha since the COVID19 outbreak and increase in consumption of Ashwagandha as health & vigour promoter. He also led emphasis on the importance of cultivation of Ashwagandha keeping in mind the huge gap of demand and supply in Indian Market. After his address the training programmes were conducted as per the Agenda (Annexure – 1) stipulated earlier.

The next topic of discussion was on the “Standard Cultivation Practices of Ashwagandha in Odisha” which was elaborated by Sri Ipsita Kumar Parida, Consultant, State



Medicinal Plants Board, Odisha. The subjects covered during this interaction were on the Climatic Conditions and Soil Requirement for Ashwagandha cultivation, different types of seed, its availability and requirement of seeds per hectate of cultivation, soil testing, scientific cultivation techniques, irrigation requirements, organic ways of integrated soil health and nutrition management, organic ways of integrated disease and pest management, harvesting & post harvesting techniques.

The next subject of discussion was on the “Theauraptic Usages of Ashwagandha & common usage of Ashwagandha as Health and Vigour Promoter” which was elaborated by Dr. Gagan Bihari Sahoo, Consultant, State Medicinal Plants Board, Odisha. The topics covered during this interaction were on the usage of

Ashwagandha leaves and root for prevention and cure of various ailments and various household usages of Ashwagandha root as health & vigour promoter and nutritional supplement.

During the post lunch session the discussion was held on the “Mandi wise price comparison of Ashwagandha and Company Specific Demand of Ashwagandha in India as well as pricing of Ashwagandha in Local Markets of Odisha” by Sri Ipsita Kumar Parida, Consultant, State Medicinal Plants Board, Odisha.



After the demand-supply chain and pricing of Ashwagandha was over, the floor was opened for discussion and clarification of doubts of the participants where the participants asked various questions

regarding cultivation and marketing of Ashwagandha which were answered by the Chief Executive, SMPB and Consultants, SMPB, Odisha.

On the morning of 5th July 2023 we left for Paikmal of Bargarh district from Bhawanipatna through the same hired vehicle and reached Paikmal at 2:30 PM of the same day. Upon reaching at Paikmal we headed towards the training venue which was at the Vindya Yasini Yatri Niwas, Nrusinghnath, Paikmal to overview the arrangements for the workshop which was scheduled to be held on 6th of July 2023 at 9:30 AM. After suggesting for some necessary modifications and arrangements to the Organizer we camped at Paikmal.

At 9:30 AM of 4th July 2023, the registration of participants who were especially from the Farming & Traditional Healers’ communities initiated and at 10:00 AM Shri Sudeep Nayak, IFS, the Chief Executive, State Medicinal Plants Board, Bhubaneswar inaugurated the workshop. The Additional Conservator of Forests and the Range Officer of Paikmal Forest Ranges



were also attended in the workshop. In this workshop 35 no of participants from Bhatli, Bargarh, Paikmal, Padampur etc. had participated in this workshop.

Shri Sudeep Nayak, IFS, the Chief Executive, State Medicinal Plants Board, Bhubaneswar in his inaugural address narrated the participants on the importance of cultivation & consumption of Ashwagandha. During his briefing he told the importance of Medicinal Plant conservation in the Gandhamardhan Hills of Paikmal which is one of the most important places of Odisha regarding the

availability of Medicinal Plants. He also narrated the huge increase in demand of Ashwagandha as health & vigour promoter. He also led emphasis on the importance of cultivation of Ashwagandha keeping in mind the huge gap of demand and supply in Indian Market. After his address the training programmes were conducted as per the Agenda (Annexure – 1) stipulated earlier.



The next topic of discussion was on the “Standard Cultivation Practices of Ashwagandha in Odisha” which was elaborated by Sri Ipsita Kumar Parida, Consultant, State Medicinal Plants Board, Odisha. The subjects covered during this interaction were on the Climatic Conditions and Soil Requirement for Ashwagandha cultivation, different types of seed, its availability and requirement of seeds per hectare of cultivation, soil testing, scientific cultivation techniques, irrigation requirements, organic ways of integrated soil health and nutrition management, organic ways of integrated disease and pest management, harvesting & post harvesting techniques.

The next subject of discussion was on the “Therapeutic Usages of Ashwagandha & common usage of Ashwagandha as Health and Vigour Promoter” which was elaborated by Dr. Gagan Bihari Sahoo, Consultant,



State Medicinal Plants Board, Odisha. The topics covered during this interaction were on the usage of Ashwagandha leaves and root for prevention and cure of various ailments and various household usages of

Ashwagandha root as health & vigour promoter and nutritional supplement.

During the post lunch session the discussion was held on the “Mandi wise price comparison of Ashwagandha and Company Specific Demand of Ashwagandha in India as well as pricing of Ashwagandha in Local Markets of Odisha” by Sri Ipsita Kumar Parida, Consultant, State Medicinal Plants Board, Odisha. After the demand-supply chain and pricing of Ashwagandha was over, the floor was opened for discussion and clarification of doubts of the participants where the participants asked various questions regarding cultivation and marketing of Ashwagandha which were answered by the Chief Executive, SMPB and Consultants, SMPB, Odisha.

Exploring the Market Potential of Medicinal Herbs

Date of Visit : 16th August 2023 to 21st August 2023

Places of Visit : Katni, Shahdol and Jabalpur of Madhya Pradesh & Dhamtari & Raipur of Chhatisgarh

Purpose of Visit : Exploring the Market Potential of Medicinal Herbs in Madhya Pradesh & Visiting to State Forest Research Institute, Jabalpur, Madhya Pradesh to access the possibilities of Exposure Visit of Medicinal Plant Farmers of Odisha to Madhya Pradesh.

Name of Officials : Sri Ipsita Kumar Parida, Consultant, SMPB, Odisha
Sri Aditya Mohanty, DEO, SMPB, Odisha

AT Katni Mandi.

1. GhantaGhar
2. Gol Bazar
3. Hanumanganj
4. Jhanda Bazar.

At Katni we met the Traders in the above mentioned markets. The details of the traders are as follows.

Sl. No.	Name & Address of the Trader	Contact No of Trader	Medicinal Plant Produces Traded By the Trader	Procurement Price List of Some Major Traded Produces (Rs. Per KG)	
				Max. Price (Off Seasonal)	Min. Price (During Harvesting)
1.	Mr. Dhaniram Ratanchand Barsaiya At – Jhanda Bazar, Murwara, Katni	09893306273 09171407027 (WhatsApp)	Amla, Bael, Harra, Behera, Bach, Kalmegh (in bulk quantities) Ashwagandha, Sarpagandha, Dhawai Flower (in small quantities) N.B. – This Traders deals with more than 50 varieties of Medicinal Herb Produces.	Amla – Rs.75/- to Rs.80/- Bal Harra – Rs.110/- to Rs.120/- Harra (Dried & Deseeded) – Rs.30/- to Rs.35/- Harra (Dried) – Rs. 18/- to Rs.20/- Kalmegh (Dried) - Rs.18/- to Rs.20/- Bach - Rs.30/- to Rs.35/- Ashwagandha – Rs. 150/- to Rs.180/- (Best Quality) Sarpagandha – Rs.750/- to Rs.800/- (Best Quality)	Amla – Rs.35/- to Rs.45/- Ashwagandha – Rs. 90/- to Rs.120/- (Best Quality) Sarpagandha – Rs.550/- to Rs.650/- (Best Quality)

				Quality) Dhawai Flower (Dried) – Rs. 30/- to Rs.35/-	
2.	Mr. Pannalal Santosh Kr. Jar At – Lalchand Srichand Market, Hanumanganj, Murwara, Katni	0925464877	Amla, Bael, Harra, Behera, Bach, Kalmegh, Ashwagandha, Sarpagandha, Dhawai Flower, Pippli, Nirmali Seeds, etc. N.B. – This Traders deals with more than 150 varieties of Medicinal Herb Produces.	Amla – Rs.75/- to Rs.80/- Bal Harra – Rs.110/- to Rs.120/- Harra (Dried & Deseeded) – Rs.30/- to Rs.35/- Harra (Dried) – Rs. 18/- to Rs.20/- Kalmegh (Dried) - Rs.18/- to Rs.20/- Bach - Rs.30/- to Rs.35/- Bael (Dried Pulp) – Rs.15/- to Rs.20/- Ashwagandha – Rs. 150/- to Rs.180/- (Best Quality) Sarpagandha – Rs.750/- to Rs.800/- (Best Quality) Dhawai Flower (Dried) – Rs. 30/- to Rs.35/- Pippli (Small - Indi) – Rs.420/- to Rs.450/- Pippli (Big – Imported / Cultivated) – Rs.550/- to Rs.590/-	Amla – Rs.35/- to Rs.45/- Ashwagandha – Rs. 90/- to Rs.120/- (Best Quality) Sarpagandha – Rs.550/- to Rs.650/- (Best Quality)
3.	Akash Traders Near Hotel Venus, Opposite of Sindhu Bhawan, Katni	09691002600	Amla, Bael, Harra, Behera, Bach, Kalmegh, Ashwagandha, Sarpagandha, Dhawai Flower, Pippli, Nirmali Seeds, etc. N.B. – This Traders deals with more than 1000 varieties of Medicinal Herb Produces.	Amla – Rs.75/- to Rs.80/- Bal Harra – Rs.110/- to Rs.120/- Harra (Dried & Deseeded) – Rs.30/- to Rs.35/- Harra (Dried) – Rs. 18/- to Rs.20/- Kalmegh (Dried) - Rs.18/- to Rs.20/- Bach - Rs.30/- to Rs.35/- Bael (Dried Pulp) – Rs.15/- to Rs.20/- Ashwagandha – Rs. 150/- to	Amla – Rs.35/- to Rs.45/-

				Rs.180/- (Best Quality) Sarpgandha – Rs.750/- to Rs.800/- (Best Quality) Dhawai Flower (Dried) – Rs. 30/- to Rs.35/- Pipli (Small - Indi) – Rs.420/- to Rs.450/- Pipli (Big - Imported / Cultivated) – Rs.550/- to Rs.590/-	Ashwagandha – Rs. 90/- to Rs.120/- (Best Quality) Sarpgandha – Rs.550/- to Rs.650/- (Best Quality)
4.	M/S. Laxmi Prasad Pandey (Rajendra Pandey) Infront of Sindhi Gurdwara, Gol Bazar, Katni	07489786711 09425466425	Amla, Bael, Harra, Behera, Bach, Kalmegh (in bulk quantities) Ashwagandha, Sarpagandha, Dhawai Flower, Pippli, Nirmali Seeds (in small quantities) N.B. – This Traders deals with more than 50 varieties of Medicinal Herb Produces.	Amla – Rs.75/- to Rs.80/- Bal Harra – Rs.110/- to Rs.120/- Harra (Dried & Deseeded) – Rs.30/- to Rs.35/- Harra (Dried) – Rs. 18/- to Rs.20/- Kalmegh (Dried) - Rs.18/- to Rs.20/- Bach - Rs.30/- to Rs.35/- Ashwagandha – Rs. 150/- to Rs.180/- (Best Quality) Sarpgandha – Rs.750/- to Rs.800/- (Best Quality) Dhawai Flower (Dried) – Rs. 30/- to Rs.35/-	Amla – Rs.35/- to Rs.45/- Ashwagandha – Rs. 90/- to Rs.120/- (Best Quality) Sarpgandha – Rs.550/- to Rs.650/- (Best Quality)
5.	Mr. Chhotelal Ramsewak Tiwari At – Near Dena Bank, Ghantaghar, Katni	09425878514	Amla, Bael, Harra, Behera, Bach, Kalmegh (in bulk quantities) Ashwagandha, Sarpagandha, Dhawai Flower (in small quantities) N.B. – This Traders deals with more than 50 varieties of Medicinal Herb Produces.	Amla – Rs.75/- to Rs.80/- Bal Harra – Rs.110/- to Rs.120/- Harra (Dried & Deseeded) – Rs.30/- to Rs.35/- Harra (Dried) – Rs. 18/- to Rs.20/- Kalmegh (Dried) - Rs.18/- to Rs.20/- Bach - Rs.30/- to Rs.35/- Ashwagandha –	Amla – Rs.35/- to Rs.45/-

Sl. No.	Name & Address of the Trader	Contact No of Trader	Medicinal Plant Produces Traded By the Trader	Procurement Price List of Some Major Traded Produces (Rs. Per KG)	
				Max. Price (Off Seasonal)	Min. Price (During Harvesting)
1.	Mr. Santosh Agarwal At – Saheed Bhagat Singh Chowk, Station Road, Shahdol	09425181630	Amla, Bael, Harra, Behera, Bach, Kalmegh (in bulk quantities) Ashwagandha, Sarpagandha, Dhawai Flower (in small quantities) N.B. – This Traders deals with more than 50 varieties of Medicinal Herb Produces.	Amla – Rs.80/- to Rs.85/- Harra (Dried & Deseeded) – Rs.35/- to Rs.40/- Harra (Dried) – Rs.18/- to Rs.20/- Kalmegh (Dried) - Rs.18/- to Rs.20/- Bach - Rs.35/- to Rs.40/- Ashwagandha – Rs. 180/- to Rs.200/- (Best Quality) Sarpagandha – Rs.750/- to Rs.800/- (Best Quality) Dhawai Flower (Dried) – Rs. 30/- to Rs.35/-	Amla – Rs.40/- to Rs.50/- Ashwagandha – Rs. 90/- to Rs.120/- (Best Quality) Sarpagandha – Rs.650/- to Rs.700/- (Best Quality)
2.	Mr. Ravi Kumar Kesharwani Main Bus Stand, Jaisingh Nagar, Shahdol	09981624094 09424333639	Amla, Bael, Harra, Behera, Bach, Kalmegh (in bulk quantities) Ashwagandha, Sarpagandha, Dhawai Flower (in small quantities) N.B. – This Traders deals with more than 100 varieties of Medicinal Herb Produces.	Amla – Rs.80/- to Rs.85/- Harra (Dried & Deseeded) – Rs.35/- to Rs.40/- Harra (Dried) – Rs.18/- to Rs.20/- Kalmegh (Dried) - Rs.18/- to Rs.20/- Bach - Rs.35/- to Rs.40/- Ashwagandha – Rs. 180/- to Rs.200/- (Best Quality) Sarpagandha – Rs.750/- to Rs.800/- (Best Quality) Dhawai Flower (Dried) – Rs. 30/- to Rs.35/-	Amla – Rs.40/- to Rs.50/- Ashwagandha – Rs. 90/- to Rs.120/- (Best Quality) Sarpagandha – Rs.650/- to Rs.700/- (Best Quality)
3.	Mr. Ajay Gupta Near Bus Stand, Jaisingh Nagar, Shahdol	09425861334	Amla, Bael, Harra, Behera, Bach, Kalmegh, Ashwagandha, Sarpagandha, Dhawai Flower, Pippli, Nirmali Seeds, etc. N.B. – This Traders deals with more than 150 varieties of Medicinal Herb Produces.	Amla – Rs.80/- to Rs.90/- Bal Harra – Rs.125/- to Rs.135/- Harra (Dried & Deseeded) – Rs.35/- to Rs.40/- Harra (Dried) – Rs.20/- to Rs.25/- Kalmegh (Dried) -	Amla – Rs.35/- to Rs.45/-

				Rs.20/- to Rs.25/- Bach - Rs.35/- to Rs.40/- Bael (Dried Pulp) – Rs.20/- to Rs.22/- Ashwagandha – Rs. 180/- to Rs.200/- (Best Quality) Sarpagandha – Rs.750/- to Rs.800/- (Best Quality) Dhawai Flower (Dried) – Rs. 35/- to Rs.40/- Pippli (Small - Indi) – Rs.450/- to Rs.490/- Pippli (Big – Imported / Cultivated) – Rs.550/- to Rs.650/-	Ashwagandha – Rs. 90/- to Rs.120/- (Best Quality) Sarpagandha – Rs.550/- to Rs.650/- (Best Quality)
--	--	--	--	--	--

We moved to Kotwadi Bazar and Sarafa Bazar of Jabalpur city to meet with the Traders as per the following list.

Sl. No.	Name & Address of the Trader	Contact No of Trader	Medicinal Plant Produces Traded By the Trader	Procurement Price List of Some Major Traded Produces (Rs. Per KG)	
				Max. Price (Off Seasonal)	Min. Price (During Harvesting)
1.	M/S. Bade Pansari At – 81, Kotwadi Bazar, Sarafa Ward, Jabalpur	09827236158 09300102655	Amla, Bael, Harra, Behera, Bach, Kalmegh (in bulk quantities) Ashwagandha, Sarpagandha, Dhawai Flower (in small quantities) N.B. – This Traders deals with more than 30 varieties of Medicinal Herb Produces.	Amla – Rs.80/- to Rs.85/- Harra (Dried & Deseeded) – Rs.35/- to Rs.40/- Harra (Dried) – Rs. 18/- to Rs.20/- Kalmegh (Dried) - Rs.18/- to Rs.20/- Ashwagandha – Rs. 180/- to Rs.200/- (Best Quality) Sarpagandha – Rs.750/- to Rs.800/- (Best Quality) Dhawai Flower (Dried) – Rs. 30/- to Rs.35/-	Amla – Rs.40/- to Rs.50/- Ashwagandha – Rs. 90/- to Rs.120/- (Best Quality) Sarpagandha – Rs.650/- to Rs.700/- (Best Quality)
2.	M/S. Ghappelal Joharlal At – Sarafa Bazar, Jabalpur	0671-4050879	Amla, Bael, Harra, Behera, Bach, Kalmegh, Ashwagandha, Sarpagandha, Dhawai Flower, Pippli, Nirmali Seeds, etc. N.B. – This Traders deals with more than 150 varieties of Medicinal Herb Produces.	Amla – Rs.80/- to Rs.90/- Bal Harra – Rs.125/- to Rs.135/- Harra (Dried & Deseeded) – Rs.35/- to Rs.40/- Harra (Dried) – Rs.	Amla – Rs.35/- to Rs.45/-

				20/- to Rs.25/- Kalmegh (Dried) - Rs.20/- to Rs.25/- Bach - Rs.35/- to Rs.40/- Bael (Dried Pulp) – Rs.20/- to Rs.22/- Ashwagandha – Rs. 180/- to Rs.200/- (Best Quality) Sarpagandha – Rs.750/- to Rs.800/- (Best Quality) Dhawai Flower (Dried) – Rs. 35/- to Rs.40/- Pippli (Small - Indi) – Rs.450/- to Rs.490/- Pippli (Big – Imported / Cultivated) – Rs.550/- to Rs.650/-	Ashwagandha – Rs. 90/- to Rs.120/- (Best Quality) Sarpagandha – Rs.550/- to Rs.650/- (Best Quality)
3.	M/S. Pansari Brothers At – 512, Marhatal, Near Gurudwara, Model Road, Jabalpur	09424367556	Amla, Bael, Harra, Behera, Bach, Kalmegh (in bulk quantities) Ashwagandha, Sarpagandha, Dhawai Flower (in small quantities) N.B. – This Traders deals with more than 30 varieties of Medicinal Herb Produces.	Amla – Rs.80/- to Rs.85/- Harra (Dried & Deseeded) – Rs.35/- to Rs.40/- Harra (Dried) – Rs. 18/- to Rs.20/- Kalmegh (Dried) - Rs.18/- to Rs.20/- Ashwagandha – Rs. 180/- to Rs.200/- (Best Quality) Sarpagandha – Rs.750/- to Rs.800/- (Best Quality) Dhawai Flower (Dried) – Rs. 30/- to Rs.35/-	Amla – Rs.40/- to Rs.50/- Ashwagandha – Rs. 90/- to Rs.120/- (Best Quality) Sarpagandha – Rs.650/- to Rs.700/- (Best Quality)

At Dhamtari we visited 6 No of Traders out of which only 4 Nos of Traders as per the following list are currently trading Medicinal Herb Produces.

Sl. No.	Name & Address of the Trader	Contact No of Trader	Medicinal Plant Produces Traded By the Trader	Procurement Price List of Some Major Traded Produces (Rs. Per KG)	
				Max. Price (Off Seasonal)	Min. Price (During Harvesting)
1.	Mr. Ashok Modi At – Gol Bazar, Dhamtari	09967477099	Amla, Bael, Harra, Behera, Bach, Kalmegh Ashwagandha, Sarpagandha, Dhawai Flower	Amla – Rs.75/- to Rs.80/- Harra (Dried & Deseeded) – Rs.35/- to Rs.40/-	Amla – Rs.40/- to Rs.50/-

			N.B. – This Traders deals with more than 30 varieties of Medicinal Herb Produces.	Harra (Dried) – Rs. 18/- to Rs.20/- Kalmegh (Dried) - Rs.15/- to Rs.18/- Ashwagandha – Rs. 120/- to Rs.150/- (Best Quality) Sarp Gandha – Rs.550/- to Rs.750/- (Best Quality) Dhawai Flower (Dried) – Rs. 30/- to Rs.35/-	Ashwagandha – Rs. 80/- to Rs.110/- (Best Quality) Sarp Gandha – Rs.650/- to Rs.800/- (Best Quality)
2.	Mr. Dilawar Rokdia At – Ghadibazar, Dhamtari	09425504665	Amla, Bael, Harra, Behera, Bach, Kalmegh, Dhawai Flower N.B. – This Traders deals with more than 30 varieties of Medicinal Herb Produces.	Amla – Rs.75/- to Rs.80/- Harra (Dried & Deseeded) – Rs.35/- to Rs.40/- Harra (Dried) – Rs. 18/- to Rs.20/- Kalmegh (Dried) - Rs.15/- to Rs.18/- Ashwagandha – Rs. 120/- to Rs.150/- (Best Quality) Sarp Gandha – Rs.550/- to Rs.750/- (Best Quality) Dhawai Flower (Dried) – Rs. 30/- to Rs.35/-	Amla – Rs.40/- to Rs.50/- Ashwagandha – Rs. 80/- to Rs.110/- (Best Quality) Sarp Gandha – Rs.650/- to Rs.800/- (Best Quality)
3.	Kirana Trading Co. At – Gayatri Nagar, Near Bus Stand, Dhamtari	09425214768	Amla, Bael, Harra, Behera, Bach, Kalmegh, Dhawai Flower N.B. – This Traders deals with more than 30 varieties of Medicinal Herb Produces.	Amla – Rs.75/- to Rs.80/- Harra (Dried & Deseeded) – Rs.35/- to Rs.40/- Harra (Dried) – Rs. 18/- to Rs.20/- Kalmegh (Dried) - Rs.15/- to Rs.18/- Dhawai Flower (Dried) – Rs. 30/- to Rs.35/-	Amla – Rs.40/- to Rs.50/-
4.	Sri Tirupati Balaji At – Ghadi Chowk, Dhamtari	09171766661 08889666602	Amla, Bael, Harra, Behera, Bach, Kalmegh, Ashwagandha, Sarp Gandha, Dhawai Flower, Pippli, Nirmali Seeds, etc. N.B. – This Traders deals with more than 150 varieties of Medicinal Herb Produces & Powder form of all the herbs	Amla – Rs.75/- to Rs.80/- Bal Harra – Rs.110/- to Rs.120/- Harra (Dried & Deseeded) – Rs.30/- to Rs.35/- Harra (Dried) – Rs. 18/- to Rs.20/- Kalmegh (Dried) - Rs.18/- to Rs.20/- Bach - Rs.30/- to Rs.35/-	Amla – Rs.35/- to Rs.45/-

				Rs.550/- to Rs.590/-	
2.	Satya Narayan Rathi At – Gol Bazar, Raipur	0925504809	Amla, Bael, Harra, Behera, Bach, Kalmegh, Dhawai Flower N.B. – This Traders deals with more than 30 varieties of Medicinal Herb Produces.	Amla – Rs.75/- to Rs.80/- Harra (Dried & Deseeded) – Rs.35/- to Rs.40/- Harra (Dried) – Rs. 18/- to Rs.20/- Kalmegh (Dried) - Rs.15/- to Rs.18/- Dhawai Flower (Dried) – Rs. 30/- to Rs.35/-	Amla – Rs.35/- to Rs.40/-



Remarks:

- ❖ During this tour in Madhya Pradesh we met with 27 No of Traders (12 in Katni, 8 in Shahdol and 7 in Jabalpur). But during our interaction we found that only 12 No of traders are currently trading in Medicinal Herb Produces. The reason as they stated was the availability of Medicinal Produces are getting decreased day by day and due to competition the profitability has also reduced.
- ❖ Similarly in Chhatisgarh we visited 8 No of Traders (6 in Dhamtari and 2 in Raipur) out of which 6 no of traders have been continuing with this trade and the reason is same as mentioned above.
- ❖ Transportation and quality of Medicinal Herb Produces are the major concern of all these traders.
- ❖ The procurement price mentioned in this report is their spot price at which they are procuring the medicinal herb produces at their door steps.

Date of Visit : 21st August – 26th August, 2023.
 Purpose of Visit : Market study of medicinal plants in Kolkata and Siliguri market of West Bengal.
 Team Member : Dr. Gagan Bihari Sahoo
 Mr. Alok Kumar Srichandan

Market Survey & Data Collection:

In this context we proceeded to Kolkata on 21st August 2023 and proceeded to Cotton Street, Badabazar, Kolkata for medicinal plants market survey. There are more than 30 herbal traders in Cotton Street, Canning Street and Sealdah. In two days we interviewed herbal market vendors (5) with the highest customer density and product quantity. We used semi-structured questionnaires and open-ended interviews with these questionnaires are drugs wise quantity procurement per annum, last three years procurement data species wise, last three years sales data species wise, where are you procured raw materials, who are the main buyers, and which part of plants highest sale and which parts are lowest sale like flower, leaves, fruit, seed, whole plant, heart wood, rhizome, bark and root. Compiled data is furnished below in Table-.

Table-1

MEDICINAL PLANTS PRICE DATA COLLECTION							
SL. No	Name of the Medicinal Plants	Botanical Name	Traders Name & Address	Quantity of Procurement per year	Procurement Price (Per Kg.)	Where are you Procured	Who are the main buyers
1	Ashwagandha	<i>Withania somnifera</i>	Basant Traders, 169, Cotton Street, Kolkata - 700007, Tel. No-033- 22581317	450-500 Ton	Rs. 215-275	W.B & MP	Auyrvedic Medicine Manufacturers WB, Odisha, Assam and Jharkhand.
2	Sarpagandha	<i>Rauwolfia serpentina</i>		120-130 Ton	Rs. 850-1000	WB & Mayurbhanj, Odisha	
3	Tulsi (Dry Leaves)	<i>Ocimum sanctum</i>		8-10Ton	Rs. 40	Medinapur, WB	
4	Brahmi (Dry)	<i>Bacopa monnieri</i>		18-20Ton	Rs. 70	Medinapur, WB	
5	Guduchi	<i>Tinospora cordifolia</i>		12-15 Ton	Rs. 60	WB	
6	Satavari	<i>Asparagus racemosus</i>		1200-1500 Ton	Rs. 400	Siliguri, WB & Nepal	
7	Amla (Dry)	<i>Phyllanthus emblica</i>		600-700 Ton	Rs. 115	UP & MP	
8	Harida (Seed less)	<i>Terminalia chebula</i>		450-500 Ton	Rs. 45	WB	
9	Bahada (Seed Less)	<i>Terminalia bellirica</i>		450-500 Ton	Rs. 24	WB	
10	Bhineem (Dry)	<i>Andrographis paniculata</i>		200-250 Ton	Rs. 40	WB	
11	Bhui amla (Dry)	<i>Phyllanthus niruri</i>		100-120 Ton	Rs. 85	WB	
12	Pippali	<i>Piper longum</i>		400-450 Ton	Rs. 650	South India	
13	Golamaricha	<i>Piper nigrum</i>		400-450 Ton	Rs. 800	South India	
14	Mandukaparni (Dry)	<i>Centella asiatica</i>		50-70 Kg	Rs. 60	Medinapur, WB	

15	Tihudi	<i>Operculina turpethum</i>	700-750 Ton	Rs. 155	WB, Odisha
16	Gudumari	<i>Gymnema sylvestre</i>	100-120 Ton	Rs. 240	South India
17	Chitrak	<i>Plumbago zeylanica</i>	50-70 Ton	Rs. 250	Odisha, South India
18	Talamuli	<i>Curculigo orchioides</i>	50-70 Ton	Rs. 220	WB & Odisha
19	Phanaphana bark	<i>Oroxylum indicum</i>	40-50 Ton	Rs. 75	Odisha, WB
20	Bruhatai	<i>Solanum indicum</i>	150-170 Ton	Rs. 70	WB
21	Krushnaparni	<i>Uraria picta</i>	30-40 Ton	Rs. 80	Odisha, Chattisgarh
22	Salapanri	<i>Desmodium gangeticum</i>	70-80 Ton	Rs.75	Odisha, Chattisgarh
23	Kantakari	<i>Solanum virginianum</i>	150-170 Ton	Rs. 40	WB
24	Mutha	<i>Cyperus rotundus</i>	200-230 Ton	Rs. 100	WB & Odisha
25	Asoka bark	<i>Sarac asoca</i>	1250-1300 Ton	Rs. 40	Mayurbhanj, Odisha
26	Lodhra bark	<i>Symplocos racemosa</i>	600-700 Ton	Rs. 85	Medinapur, WB
27	varuna bark	<i>Cratava nurvula</i>	200-220 Ton	Rs140	Chennai, TN
28	Arjuna bark	<i>Terminalia arjuna</i>	300-350 Ton	Rs. 45	Odisha, WB

Table-2

MEDICINAL PLANTS PRICE DATA COLLECTION							
SL. No	Name of the Medicinal Plants	Botanical Name	Traders Name & Address	Quantity of Procurement per year	Procurement Price (Per Kg.)	Where are you Procured	Who are the main buyers
1	Ashwagandha	<i>Withania somnifera</i>	Dutta & Dutta, 162, Cotton Street, Kolkata - 700007, Tel. No-033- 22582806	150-200 Ton	Rs. 250	W.B & MP	Auyrvedic Medicine Manufacturers WB, Odisha, Assam and Jharkhand.
2	Sarpagandha	<i>Rauvolfia serpentina</i>		80-100 Ton	Rs. 850	WB & Mayurbhanj, Odisha	
3	Tulsi (Dry Leaves)	<i>Ocimum sanctum</i>		5-6Ton	Rs. 45	Medinapur, WB	
4	Brahmi (Dry)	<i>Bacopa monnieri</i>		6-8Ton	Rs. 75	Medinapur, WB	
5	Guduchi	<i>Tinospora cordifolia</i>		12-15 Ton	Rs. 60	WB	
6	Satavari	<i>Asparagus racemosus</i>		400-500 Ton	Rs. 450	Siliguri, WB & Nepal	
7	Amla (Dry)	<i>Phyllanthus emblica</i>		450-500 Ton	Rs. 115	UP & MP	
8	Harida (Seed less)	<i>Terminalia</i>		350-400	Rs. 45	WB	

		<i>chebula</i>		Ton		
9	Bahada (Seed Less)	<i>Terminalia bellirica</i>		350-400 Ton	Rs. 24	WB
10	Bhineem (Dry)	<i>Andrographis paniculata</i>		150-200 Ton	Rs. 45	WB
11	Bhui amla (Dry)	<i>Phyllanthus niruri</i>		150-200 Ton	Rs. 85	WB
12	Pippali	<i>Piper longum</i>		200-250 Ton	Rs. 650	South India
13	Golamaricha	<i>Piper nigrum</i>		200-250 Ton	Rs. 800	South India
14	Mandukaparni (Dry)	<i>Centella asiatica</i>		20-30 Kg	Rs. 60	Medinapur, WB
15	Tihudi	<i>Operculina turpethum</i>		400-550 Ton	Rs. 155	WB, Odisha
16	Gudumari	<i>Gymnema sylvestre</i>		80-100 Ton	Rs. 240	South India
17	Chitrak	<i>Plumbago zeylanica</i>		10-15 Ton	Rs. 250	Odisha, South India
18	Talamuli	<i>Curculigo orchioides</i>		50-70 Ton	Rs. 220	WB & Odisha
19	Phanaphana bark	<i>Oroxylum indicum</i>		40-50 Ton	Rs. 75	Odisha, WB
20	Bruhati	<i>Solanum indicum</i>		150-170 Ton	Rs. 70	WB
21	Krushnaparni	<i>Uraria picta</i>		30-40 Ton	Rs. 80	Odisha, Chattisgarh
22	Salapanri	<i>Desmodium gangeticum</i>		70-80 Ton	Rs.75	Odisha, Chattisgarh
23	Kantakari	<i>Solanum virginianum</i>		150-170 Ton	Rs. 40	WB
24	Mutha	<i>Cyperus rotundus</i>		200-230 Ton	Rs. 100	WB & Odisha
25	Asoka bark	<i>Sarac asoca</i>		1250-1300 Ton	Rs. 40	Mayurbhanj, Odisha
26	Lodhra bark	<i>Symplocos racemosa</i>		600-700 Ton	Rs. 85	Medinapur, WB
27	varuna bark	<i>Cratava nurvula</i>		200-220 Ton	Rs140	Chennai, TN
28	Arjuna bark	<i>Terminalia arjuna</i>		300-350 Ton	Rs. 45	Odisha, WB

Table-3

MEDICINAL PLANTS PRICE DATA COLLECTION							
SL. No	Name of the Medicinal Plants	Botanical Name	Traders Name & Address	Quantity of Procurement per year	Procurement Price (Per Kg.)	Where are you Procured	Who are the main buyers
1	Ashwagandha	<i>Withania somnifera</i>	Shiba Pada Kundu & Sons, 168B, Cotton Street, Kolkata - 700007, Mob. No-8910877928	120-180 Ton	Rs. 250	W.B & MP	Ayurvedic Medicine Manufacturers WB,

2	Sarpagandha	<i>Rauvolfia serpentina</i>	200-250 Ton	Rs. 850	WB & Mayurbhanj, Odisha	Odisha, Assam and Jharkhand.
3	Tulsi (Dry Leaves)	<i>Ocimum sanctum</i>	9-10Ton	Rs. 45	Medinapur, WB	
4	Brahmi (Dry)	<i>Bacopa monnieri</i>	12-15Ton	Rs. 75	Medinapur, WB	
5	Guduchi	<i>Tinospora cordifolia</i>	8-10 Ton	Rs. 60	WB	
6	Satavari	<i>Asparagus racemosus</i>	200-250 Ton	Rs. 450	Siliguri, WB & Nepal	
7	Amla (Dry)	<i>Phyllanthus emblica</i>	600-650 Ton	Rs. 115	UP & MP	
8	Harida (Seed less)	<i>Terminalia chebula</i>	250-300 Ton	Rs. 45	WB	
9	Bahada (Seed Less)	<i>Terminalia bellirica</i>	250-300 Ton	Rs. 24	WB	
10	Bhineem (Dry)	<i>Andrographis paniculata</i>	150-200 Ton	Rs. 45	WB	
11	Bhui amla (Dry)	<i>Phyllanthus niruri</i>	150-200 Ton	Rs. 85	WB	
12	Pippali	<i>Piper longum</i>	400-500 Ton	Rs. 650	South India	
13	Golamaricha	<i>Piper nigrum</i>	600-650 Ton	Rs. 800	South India	
14	Mandukaparni (Dry)	<i>Centella asiatica</i>	20-30 Kg	Rs. 60	Medinapur, WB	
15	Tihudi	<i>Operculina turpethum</i>	1000-1250 Ton	Rs. 155	WB, Odisha	
16	Gudumari	<i>Gymnema sylvestre</i>	60-70 Ton	Rs. 240	South India	
17	Chitrak	<i>Plumbago zeylanica</i>	10-15 Ton	Rs. 250	Odisha, South India	
18	Talamuli	<i>Curculigo orchioides</i>	90-100 Ton	Rs. 220	WB & Odisha	
19	Phanaphana bark	<i>Oroxylum indicum</i>	45-50 Ton	Rs. 75	Odisha, WB	
20	Bruhati	<i>Solanum indicum</i>	150-170 Ton	Rs. 70	WB	
21	Krushnaparni	<i>Uraria picta</i>	10-12 Ton	Rs. 80	Odisha, Chattisgarh	
22	Salapanri	<i>Desmodium gangeticum</i>	15-20 Ton	Rs.75	Odisha, Chattisgarh	
23	Kantakari	<i>Solanum virginianum</i>	250-300 Ton	Rs. 40	WB	
24	Mutha	<i>Cyperus rotundus</i>	200-230 Ton	Rs. 100	WB & Odisha	
25	Asoka bark	<i>Sarac asoca</i>	150-200 Ton	Rs. 40	Mayurbhanj, Odisha	
26	Lodhra bark	<i>Symplocos racemosa</i>	200-300 Ton	Rs. 85	Medinapur, WB	
27	varuna bark	<i>Cratava nurvula</i>	50-70 Ton	Rs140	Chennai, TN	
28	Arjuna bark	<i>Terminalia arjuna</i>	100-150 Ton	Rs. 45	Odisha, WB	

Table-4

MEDICINAL PLANTS PRICE DATA COLLECTION

SL. No	Name of the Medicinal Plants	Botanical Name	Traders Name & Address	Quantity of Procurement per year	Procurement Price (Per Kg.)	Where are you Procured	Who are the main buyers
1	Ashwagandha	<i>Withania somnifera</i>	AGA Herbs & Herbal, 61, Canning Street, Teretti, Kolkata, Mob. No-09038211786	120-125 Ton	Rs. 250	W.B & MP	Auyrvedic Medicine Manufacturers WB, Odisha, Assam and Jharkhand
2	Sarpagandha	<i>Rauvolfia serpentina</i>		80-100 Ton	Rs. 850	WB & Mayurbhanj, Odisha	
3	Tulsi (Dry Leaves)	<i>Ocimum sanctum</i>		1-1.2Ton	Rs. 45	Medinapur, WB	
4	Brahmi (Dry)	<i>Bacopa monnieri</i>		4-4.5Ton	Rs. 75	Medinapur, WB	
5	Guduchi	<i>Tinospora cordifolia</i>		2-2.5 Ton	Rs. 60	WB	
6	Satavari	<i>Asparagus racemosus</i>		40-45 Ton	Rs. 450	Siliguri, WB & Nepal	
7	Amla (Dry)	<i>Phyllanthus emblica</i>		200-250 Ton	Rs. 115	UP & MP	
8	Harida (Seed less)	<i>Terminalia chebula</i>		150-200 Ton	Rs. 45	WB	
9	Bahada (Seed Less)	<i>Terminalia bellirica</i>		150-180 Ton	Rs. 24	WB	
10	Bhineem (Dry)	<i>Andrographis paniculata</i>		30-35 Ton	Rs. 45	WB	
11	Bhui amla (Dry)	<i>Phyllanthus niruri</i>		2-3 Ton	Rs. 85	WB	
12	Pippali	<i>Piper longum</i>		40-45 Ton	Rs. 650	South India	
13	Golamaricha	<i>Piper nigrum</i>		60-65Ton	Rs. 800	South India	
14	Mandukaparni (Dry)	<i>Centella asiatica</i>		10-15 Ton	Rs. 60	Medinapur, WB	
15	Tihudi	<i>Operculina turpethum</i>		200-250 Ton	Rs. 155	WB, Odisha	
16	Gudumari	<i>Gymnema sylvestre</i>		15-20 Ton	Rs. 240	South India	
17	Chitrak	<i>Plumbago zeylanica</i>		1-1.5 Ton	Rs. 250	Odisha, South India	
18	Talamuli	<i>Curculigo orchoides</i>		20-30 Ton	Rs. 220	WB & Odisha	
19	Phanaphana bark	<i>Oroxylum indicum</i>		45-50 Ton	Rs. 75	Odisha, WB	
20	Bruhati	<i>Solanum indicum</i>		25-30 Ton	Rs. 70	WB	
21	Krushnaparni	<i>Uraria picta</i>					
22	Salapanri	<i>Desmodium gangeticum</i>					
23	Kantakari	<i>Solanum virginianum</i>		10-12 Ton	Rs. 40	WB	
24	Mutha	<i>Cyperus rotundus</i>		50-60 Ton	Rs. 100	WB & Odisha	

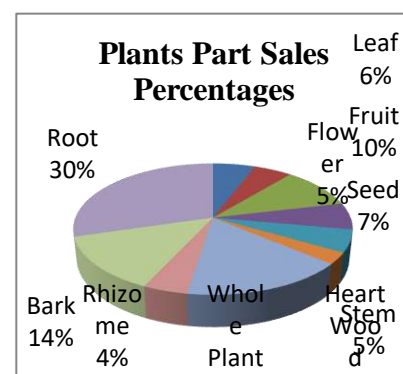
25	Asoka bark	<i>Sarac asoca</i>		150-200 Ton	Rs. 40	Mayurbhanj, Odisha
26	Lodhra bark	<i>Symplocos racemosa</i>		150-200 Ton	Rs. 85	Medinapur, WB
27	varuna bark	<i>Cratava nurvula</i>				
28	Arjuna bark	<i>Terminalia arjuna</i>		80-100 Ton	Rs. 45	Odisha, WB

Table -5

MEDICINAL PLANTS PRICE DATA COLLECTION							
SL. No	Name of the Medicinal Plants	Botanical Name	Traders Name & Address	Quantity of Procurement per year	Procurement Price (Per Kg.)	Where are you Procured	Who are the main buyers
1	Ashwagandha	<i>Withania somnifera</i>	Herbal House, HQCC, F8X, Sealdah Road, Baithak Khanna, Kolkata-700009	250-275 Ton	Rs. 250	W.B & MP	Auyrvedic Medicine Manufacturers WB, Odisha, Assam and Jharkhand
2	Sarpagandha	<i>Rauvolfia serpentina</i>		80-90 Ton	Rs. 850	WB & Mayurbhanj, Odisha	
3	Tulsi (Dry Leaves)	<i>Ocimum sanctum</i>		4-4.5Ton	Rs. 45	Medinapur, WB	
4	Brahmi (Dry)	<i>Bacopa monnieri</i>		6-6.5Ton	Rs. 75	Medinapur, WB	
5	Guduchi	<i>Tinospora cordifolia</i>		9-9.5 Ton	Rs. 60	WB	
6	Satavari	<i>Asparagus racemosus</i>		100-120 Ton	Rs. 450	Siliguri, WB & Nepal	
7	Amla (Dry)	<i>Phyllanthus emblica</i>		350-400 Ton	Rs. 115	UP & MP	
8	Harida (Seed less)	<i>Terminalia chebula</i>		250-275 Ton	Rs. 45	WB	
9	Bahada (Seed Less)	<i>Terminalia bellirica</i>		180-200 Ton	Rs. 24	WB	
10	Bhineem (Dry)	<i>Andrographis paniculata</i>		45-50 Ton	Rs. 45	WB	
11	Bhui amla (Dry)	<i>Phyllanthus niruri</i>		15-20 Ton	Rs. 85	WB	
12	Pippali	<i>Piper longum</i>		120-150 Ton	Rs. 650	South India	
13	Golamaricha	<i>Piper nigrum</i>		250-300 Ton	Rs. 800	South India	
14	Mandukaparni (Dry)	<i>Centella asiatica</i>		18-20 Ton	Rs. 60	Medinapur, WB	
15	Tihudi	<i>Operculina turpethum</i>		450-500 Ton	Rs. 155	WB, Odisha	
16	Gudumari	<i>Gymnema sylvestre</i>		6-8 Ton	Rs. 240	South India	
17	Chitrak	<i>Plumbago zeylanica</i>		1-1.5 Ton	Rs. 250	Odisha, South India	
18	Talamuli	<i>Curculigo orchioides</i>		40-45 Ton	Rs. 220	WB & Odisha	
19	Phanaphana bark	<i>Oroxylum indicum</i>		80-90 Ton	Rs. 75	Odisha, WB	
20	Bruhati	<i>Solanum indicum</i>		25-30	Rs. 70	WB	

			Ton		
21	Krushnaparni	<i>Uraria picta</i>	3-4 Ton	Rs. 70	Odisha
22	Salapanri	<i>Desmodium gangeticum</i>	5-6 Ton	Rs. 60	Odisha
23	Kantakari	<i>Solanum virginianum</i>	10-12 Ton	Rs. 40	WB
24	Mutha	<i>Cyperus rotundus</i>	30-40 Ton	Rs. 100	WB & Odisha
25	Asoka bark	<i>Sarac asoca</i>	250-300 Ton	Rs. 40	Mayurbhanj, Odisha
26	Lodhra bark	<i>Symplocos racemosa</i>	180-200 Ton	Rs. 85	Medinapur, WB
27	varuna bark	<i>Cratava nurvula</i>	6-8 Ton	Rs. 85	Chennai
28	Arjuna bark	<i>Terminalia arjuna</i>	20-25 Ton	Rs. 45	Odisha, WB

As per our observation we found that all the traders are procuring cultivated raw-drugs from Medinapur (WB) like Brahmi, Mandukaparni, Bruhati, Kantakari and ashwagandha from Mursidabad, West Bengal and Madhya Pradesh. Maximum roots, barks and rhizomes are procuring from Mayurbhanj district of Odisha. Maximum spices items are procuring from South India. In this study in Kolkata market we found that each part of medicinal plants percentages procuring from different parts of India. Pie chat given below.



Next we visited Mahaveerstan, Siliguri and found that around 15 numbers of traders are there. We were discussed with major three traders all the collected data are given below.

Table-1

MEDICINAL PLANTS PRICE DATA COLLECTION							
SL. No	Name of the Medicinal Plants	Botanical Name	Traders Name & Address	Quantity of Procurement per year	Procurement Price (Per Kg.)	Where are you Procured	Who are the main buyers
1	Ashwagandha	<i>Withania somnifera</i>	Suryabansi & Rajbansi Trades, New Market, Sirak, Dist-Darjiling, Mob No-9832017291	450-500 Ton	Rs. 280	West Bengal &	Auyrvedic Medicine Manufacturers WB, Assam and all NE States.
2	Sarpagandha	<i>Rauvolfia serpentina</i>		125-150 Ton	Rs. 950	NE States & Nepal	
3	Tulsi (Dry Leaves)	<i>Ocimum sanctum</i>		8-9 Ton	Rs. 120	Medinapur, WB	
4	Brahmi (Dry)	<i>Bacopa monnieri</i>		10-12 Ton	Rs. 60-150	Assam & WB	
5	Guduchi	<i>Tinospora cordifolia</i>		9-9.5 Ton	Rs. 60	WB	
6	Satavari	<i>Asparagus racemosus</i>		250-300 Ton	Rs. 450	Siliguri, WB & Nepal	
7	Amla (Dry)	<i>Phyllanthus emblica</i>		700-750 Ton	Rs. 100-115	UP & MP	
8	Harida (Seed less)	<i>Terminalia</i>		375-400	Rs. 60	WB,	

		<i>chebula</i>		Ton		Assam
9	Bahada (Seed Less)	<i>Terminalia bellirica</i>		200-250 Ton	Rs. 40	WB, Assam
10	Bhineem (Dry)	<i>Andrographis paniculata</i>		45-50 Ton	Rs. 60	WB, Assam
11	Bhui amla (Dry)	<i>Phyllanthus niruri</i>		15-20 Ton	Rs. 85	Siliguri, Assam
12	Pippali	<i>Piper longum</i>		150-180 Ton	Rs. 620	South India
13	Golamaricha	<i>Piper nigrum</i>		230-250 Ton	Rs. 705	South India
14	Mandukaparni (Dry)	<i>Centella asiatica</i>		18-20 Ton	Rs. 60	Medinapur, WB
15	Tihudi	<i>Operculina turpethum</i>		450-500 Ton	Rs. 155	WB, Nepal
16	Gudumari	<i>Gymnema sylvestre</i>		5-6 Ton	Rs. 220	Assam
17	Chitrak	<i>Plumbago zeylanica</i>		2-2.5 Ton	Rs. 220	Nepal
18	Talamuli	<i>Curculigo orchoides</i>		20-25 Ton	Rs. 220	WB & Assam
19	Phanaphana bark	<i>Oroxylum indicum</i>		80-90 Ton	Rs. 75	WB, Nepal
20	Bruhatai	<i>Solanum indicum</i>		25-30 Ton	Rs. 70	WB
21	Krushnaparni	<i>Uraria picta</i>		3-4 Ton	Rs. 70	Nepal
22	Salapanri	<i>Desmodium gangeticum</i>		2-3 Ton	Rs. 60	Assam, Nepal
23	Kantakari	<i>Solanum virginianum</i>		2-2.5Ton	Rs. 40	WB
24	Mutha	<i>Cyperus rotundus</i>		10-15 Ton	Rs. 100	WB
25	Asoka bark	<i>Sarac asoca</i>		300-350 Ton	Rs. 40	Nepal
26	Lodhra bark	<i>Symplocos racemosa</i>		200-250 Ton	Rs. 80	Nepal
27	varuna bark	<i>Cratava nurvula</i>		6-8 Ton	Rs. 85	Chennai
28	Arjuna bark	<i>Terminalia arjuna</i>		20-25 Ton	Rs. 45	Assam, WB

Table -2

MEDICINAL PLANTS PRICE DATA COLLECTION							
SL. No	Name of the Medicinal Plants	Botanical Name	Traders Name & Address	Quantity of Procurement per year	Procurement Price (Per Kg.)	Where are you Procured	Who are the main buyers
1	Ashwagandha	<i>Withania somnifera</i>	Tauji Ki Dukan, Mahaveerstan, Siliguri, Mob No- 94343539007	50-60 Ton	Rs. 280	Pradesh &	Auyrvedic Medicine Manufacturers WB, Assam and all NE States.
2	Sarpagandha	<i>Rauvolfia serpentina</i>		5-6 Ton	Rs. 950	NE States & Nepal	
3	Tulsi (Dry Leaves)	<i>Ocimum sanctum</i>		.5-1 Ton	Rs. 120	Medinapur, WB	
4	Brahmi (Dry)	<i>Bacopa monnieri</i>		1-1.5 Ton	Rs. 60-150	Assam & WB	

5	Guduchi	<i>Tinospora cordifolia</i>	2-2.5 Ton	Rs. 60	WB
6	Satavari	<i>Asparagus racemosus</i>	50-70 Ton	Rs. 500	Siliguri, WB & Nepal
7	Amla (Dry)	<i>Phyllanthus emblica</i>	100-120 Ton	Rs. 100-115	UP & MP
8	Harida (Seed less)	<i>Terminalia chebula</i>	30-35 Ton	Rs. 60	WB, Assam
9	Bahada (Seed Less)	<i>Terminalia bellirica</i>	20-25 Ton	Rs. 40	WB, Assam
10	Bhineem (Dry)	<i>Andrographis paniculata</i>	5-6 Ton	Rs. 60	WB, Assam
11	Bhui amla (Dry)	<i>Phyllanthus niruri</i>	.5-.7 Ton	Rs. 85	Siliguri, Assam
12	Pippali	<i>Piper longum</i>	20-22 Ton	Rs. 620	South India
13	Golamaricha	<i>Piper nigrum</i>	30-35 Ton	Rs. 705	South India
14	Mandukaparni (Dry)	<i>Centella asiatica</i>			
15	Tihudi	<i>Operculina turpethum</i>	50-60 Ton	Rs. 155	WB, Nepal
16	Gudumari	<i>Gymnema sylvestre</i>			
17	Chitrak	<i>Plumbago zeylanica</i>			
18	Talamuli	<i>Curculigo orchioides</i>			
19	Phanaphana bark	<i>Oroxylum indicum</i>	10-15 Ton	Rs. 75	WB, Nepal
20	Bruhati	<i>Solanum indicum</i>			
21	Krushnaparni	<i>Uraria picta</i>			
22	Salapanri	<i>Desmodium gangeticum</i>	2-3 Ton	Rs. 60	Assam, Nepal
23	Kantakari	<i>Solanum virginianum</i>			
24	Mutha	<i>Cyperus rotundus</i>			
25	Asoka bark	<i>Sarac asoca</i>	25-35 Ton	Rs. 40	Nepal
26	Lodhra bark	<i>Symplocos racemosa</i>	20-25 Ton	Rs. 80	Nepal
27	varuna bark	<i>Cratava nurvula</i>	2-3 Ton	Rs. 85	Chennai
28	Arjuna bark	<i>Terminalia arjuna</i>	2-2.5 Ton	Rs. 45	Assam, WB

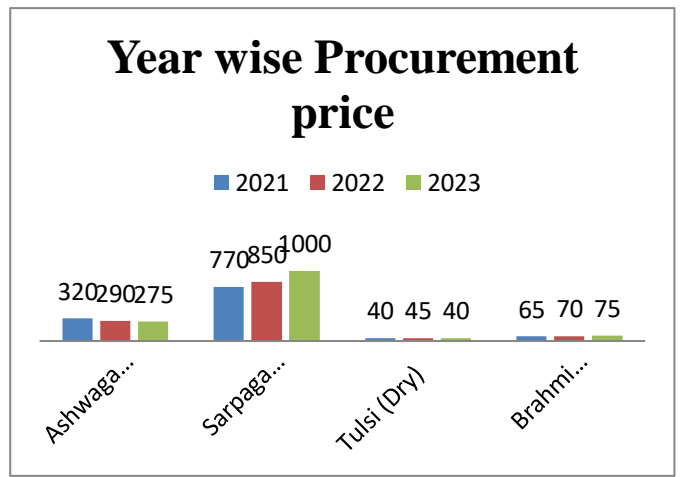
Table -3

MEDICINAL PLANTS PRICE DATA COLLECTION							
SL. No	Name of the Medicinal Plants	Botanical Name	Traders Name & Address	Quantity of Procurement per year	Procurement Price (Per Kg.)	Where are you Procured	Who are the main buyers
1	Ashwagandha	<i>Withania somnifera</i>	Ganesh Ram & Beniram Prasad, Mahaveerstan, Siliguri, Mob No-9832054037	50-55 Ton	Rs. 280	Pradesh &	Ayurvedic Medicine Manufacturers WB, Assam

2	Sarpagandha	<i>Rauvolfia serpentina</i>	12-15 Ton	Rs. 950	NE States & Nepal	and all NE States.
3	Tulsi (Dry Leaves)	<i>Ocimum sanctum</i>	2-2.5 Ton	Rs. 120	Medinapur, WB	
4	Brahmi (Dry)	<i>Bacopa monnieri</i>	500-550 Kg.	Rs. 60-150	Assam & WB	
5	Guduchi	<i>Tinospora cordifolia</i>	1-1.5 Ton	Rs. 60	WB	
6	Satavari	<i>Asparagus racemosus</i>	180-200 Ton	Rs. 450	Siliguri, WB & Nepal	
7	Amla (Dry)	<i>Phyllanthus emblica</i>	350-400 Ton	Rs. 100-115	UP & MP	
8	Harida (Seed less)	<i>Terminalia chebula</i>	125-150 Ton	Rs. 60	WB, Assam	
9	Bahada (Seed Less)	<i>Terminalia bellirica</i>	150-200 Ton	Rs. 40	WB, Assam	
10	Bhineem (Dry)	<i>Andrographis paniculata</i>	45-50 Ton	Rs. 60	WB, Assam	
11	Bhui amla (Dry)	<i>Phyllanthus niruri</i>	15-20 Ton	Rs. 85	Siliguri, Assam	
12	Pippali	<i>Piper longum</i>	100-120 Ton	Rs. 620	South India	
13	Golamaricha	<i>Piper nigrum</i>	210-220 Ton	Rs. 705	South India	
14	Mandukaparni (Dry)	<i>Centella asiatica</i>	12-13 Ton	Rs. 60	Medinapur, WB	
15	Tihudi	<i>Operculina turpethum</i>	150-170 Ton	Rs. 155	WB, Nepal	
16	Gudumari	<i>Gymnema sylvestre</i>	2-3 Ton	Rs. 220	Assam	
17	Chitrak	<i>Plumbago zeylanica</i>	1-1.5 Ton	Rs. 220	Nepal	
18	Talamuli	<i>Curculigo orchioides</i>	5-7 Ton	Rs. 220	WB & Assam	
19	Phanaphana bark	<i>Oroxylum indicum</i>	20-25 Ton	Rs. 75	WB, Nepal	
20	Bruhatai	<i>Solanum indicum</i>	09-10 Ton	Rs. 70	WB	
21	Krushnaparni	<i>Uraria picta</i>	200-250 Kg.	Rs. 70	Nepal	
22	Salapanri	<i>Desmodium gangeticum</i>	1-1.5 Ton	Rs. 60	Assam, Nepal	
23	Kantakari	<i>Solanum virginianum</i>	1-1.5 Ton	Rs. 40	WB	
24	Mutha	<i>Cyperus rotundus</i>	4-5 Ton	Rs. 100	WB	
25	Asoka bark	<i>Sarac asoca</i>	120-150 Ton	Rs. 40	Nepal	
26	Lodhra bark	<i>Symplocos racemosa</i>	120-150 Ton	Rs. 80	Nepal	
27	varuna bark	<i>Cratava nurvula</i>	2-2.5 Ton	Rs. 85	Chennai	
28	Arjuna bark	<i>Terminalia arjuna</i>	2-2.5 Ton	Rs. 45	Assam, WB	

❖ Information on the total quantity of *Withaniasomnifera* (roots), *Rauhalfia serpentina* (roots), *Bacopa muniari*(dry), and *Occimum sanctum*(dry leaves) marketed from entire market, and the rates (Rs/kg) in the years 2021, 2022 and 2023 are given below column.

❖ As per the survey and discussion with different traders both Kolkata and Siliguri in the last three years medicinal plants requirements are increasing. In the year 2021-2022 due to Covid - 19 the medicinal plants requirement was very high like Ashwagandha, Amla, Giloy, Mulethi, Tulsi, Bacha etc. In this survey we found that 85% of medicinal plants are collecting from wild and only 25% of medicinal plants cultivating. As per the state wise root, bark and rhizomes are collecting maximum from Odisha, Nepal and Assam.



State Level Seminar on Conservation, Development and Sustainable Management of Medicinal Plants for Rural People and Women in Odisha



Chief Executive, SMPB, Odisha along with other dignitaries on the dies of the Workshop on Conservation, Development and Sustainable Management of Medicinal Plants



Participants of the Workshop on Conservation, Development and Sustainable Management of Medicinal Plants



Sj. Sudeep Nayak, IFS, Chief Executive, SMPB, Odisha addressing the

Participants during the Workshop



NATION-WIDE CAMPAIGN ON ASHWAGANDHA
(District wise School Level Essay Writing & Drawing Competition
on Ashwagandha as Health Promoter)

Under Nation-wide Campaign on Ashwagandha, Shri Sudeep Nayak, IFS, the Chief Executive, State Medicinal Plants Board, Odisha decided to conduct School Level Awareness Campaigns to promote Ashwagandha consumption and cultivation across the state and it was decided to conduct School Level Essay Writing and Drawing competitions in Kalahandi & Subarnapur districts.



District Education Officer, Kalahandi.

The 1st District Level Awareness Campaign was planned for Kalahandi district involving 50 no of students from 5 no of High Schools. The event was organized at B.M. High School, Bhawanipatna on 7th November 2023 where 25 No of students had participated in Essay Writing Competition and 25 nos had participated in Drawing Competition from these 5 Nos of Schools pre-selected by the



Kalahandi district.

The registration of School Level Essay Writing and Drawing Competition under Nation-wide Ashwagandha Campaign at B.M. High School, Bhawanipatna at 10:15 AM. The competition began at 11:15 AM and completed at 12:15 PM. Then valuation was done by independent jury members, eminent teachers from non-participating schools and result was declared in the above 2 events separately by different Jury Teachers. At 1:30 PM the presentation giving ceremony was conducted in presence of Shri Sudeep Nayak, IFS, the Chief Executive, State Medicinal Plants Board, Odisha and Shri Sushant Kumar Chopdar, the District Education Officer cum DPC,

Event wise list of Winners is enclosed in the following table.

Sl. No	Name of the Event	Name of the Student	Name of the School	Position Held
1	Essay Writing Competition	Jaya Rana	Govt. Girl's High School, Bhawanipatna, Kalahandi	1 st
2		Khusbu Bagarti	Municipal High School, Bhawanipatna, Kalahandi	2 nd
3		Swatik Ranjan Das	Manikeswari High School, Bhawanipatna, Kalahandi	3 rd
4	Drawing Competition	Riddhi Rout	Govt. Girl's High School, Bhawanipatna, Kalahandi	1 st
5		Namrata Majhi	Govt. Girl's High School, Bhawanipatna, Kalahandi	2 nd
6		Monalisha Bishi	Manikeswari High School, Bhawanipatna, Kalahandi	3 rd



In this event all the participants were presented with one Certificate of Participation and a School Bag as appreciation each. The student getting 1st Position in each event was presented with One Certificate of appreciation, one Shield and one Smart Watch. The student getting 2nd Position in each event was presented with One Certificate of appreciation, one Shield and one hot and cold Tiffin Box and the student getting 3rd Position in each event was presented with One

Certificate of appreciation, one Shield and one hot and cold Water Bottle.

Similarly, the 2nd District Level Awareness Campaign was planned for Kalahandi district involving 50



no of students from 5 no of High Schools. The event was organized at Govt. Girl's. High School, Sonepur on 9th November 2023 where 25 No of students had participated in Essay Writing Competition and 25 nos had participated in Drawing Competition from these 5 Nos of Schools pre-selected by the District Education Officer, Sonepur.

The registration of School Level Essay Writing and Drawing Competition under Nation-wide Ashwagandha Campaign at Govt. Girl's. High School, Sonepur at 10:15 AM. The competition began at 11:15 AM and completed at 12:15 PM. Then valuation was done by independent jury members, eminent teachers from non-participating schools and result was declared in the above 2 events separately by different Jury Teachers. At 1:30 PM the presentation giving ceremony was conducted in presence of Shri Sudeep Nayak, IFS, the Chief Executive, State Medicinal Plants Board, Odisha and Dr. Ramakant Gartia, the Addl. District Education Officer, Subarnpur district.



Event wise list of Winners is enclosed in the following table.

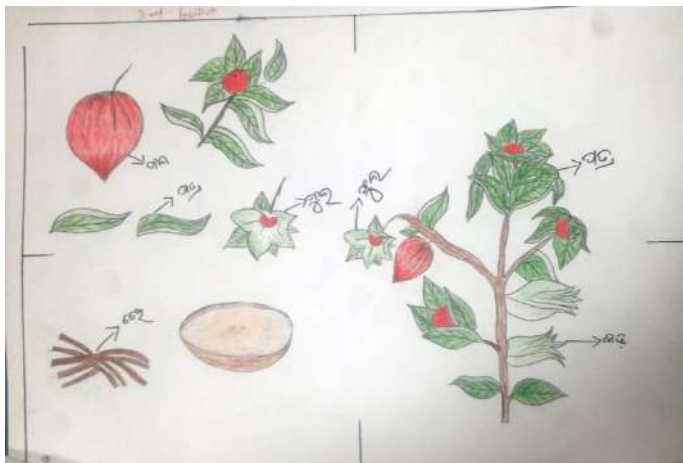
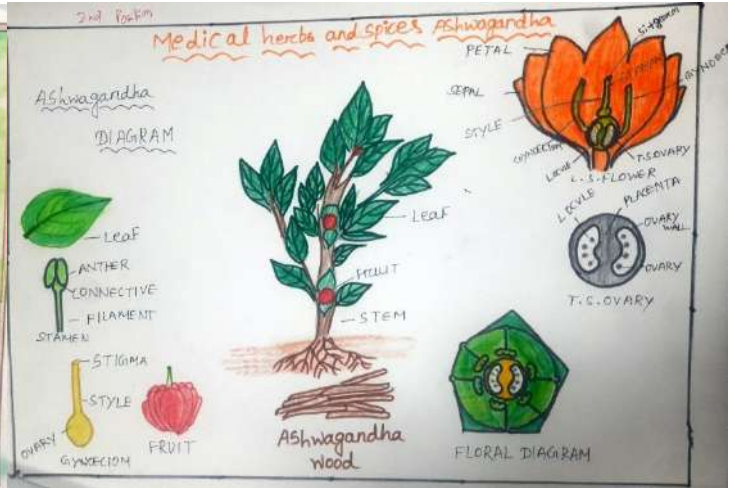
Sl. No	Name of the Event	Name of the Student	Name of the School	Position Held
1	Essay Writing Competition	Saraswati Padhan	PS Girl's High School, Biramaharajpur, Subarnapur	1 st
2		Monalika Sahu	Govt. Girl's High School, Sonapur, Subarnapur	2 nd
3		Koyal Dash	S.N. High School, Sibatola, Subarnapur	3 rd
4	Drawing Competition	Shreeya Priyadarshini Meher	Govt. Girl's High School, Biramaharajpur, Subarnapur	1 st
5		Shreeya Dash	Govt. Girl's High School, Sonapur, Subarnapur	2 nd
6		Preeti Mukhi	Parameswari High School, Bisipada	3 rd



In this event all the participants were presented with one Certificate of Participation and a School Bag as appreciation each. The student getting 1st Position in each event was presented with One Certificate of appreciation, one Shield and one Smart Watch. The student getting 2nd Position in each event was presented with One Certificate of appreciation, one Shield and one hot and cold Tiffin Box and the student getting 3rd Position in each event was presented with One Certificate of appreciation, one Shield and one hot and cold Water Bottle.



Drawing Clips done by Some Students



Drawings of 1st, 2nd and 3rd Prize winners of School Level Drawing Competition held at B. M. High School, Bhawanipatna, Kalahandi



Drawings of 1st, 2nd and 3rd Prize winners of School Level Drawing Competition held at Govt. Girls' High School, Sonapur, Subarnapur

ସମ୍ବାଦ

ସଂପାଦକ: ଉତ୍ତମଧର ସାମଲ ପଞ୍ଚମ ସଂପାଦକ: ଡାକ୍ତର ରାମଚନ୍ଦ୍ର ପୁରୀ ପଞ୍ଚମ ସଂପାଦକ: ଡାକ୍ତର ରାମଚନ୍ଦ୍ର ପୁରୀ

ରାଜ୍ୟ ଔଷଧୀୟ ଉଦ୍ଭିଦ ପରିଷଦ ପକ୍ଷରୁ ଚିତ୍ରାଙ୍କନ ଓ ପ୍ରବନ୍ଧ ପ୍ରତିଯୋଗିତା

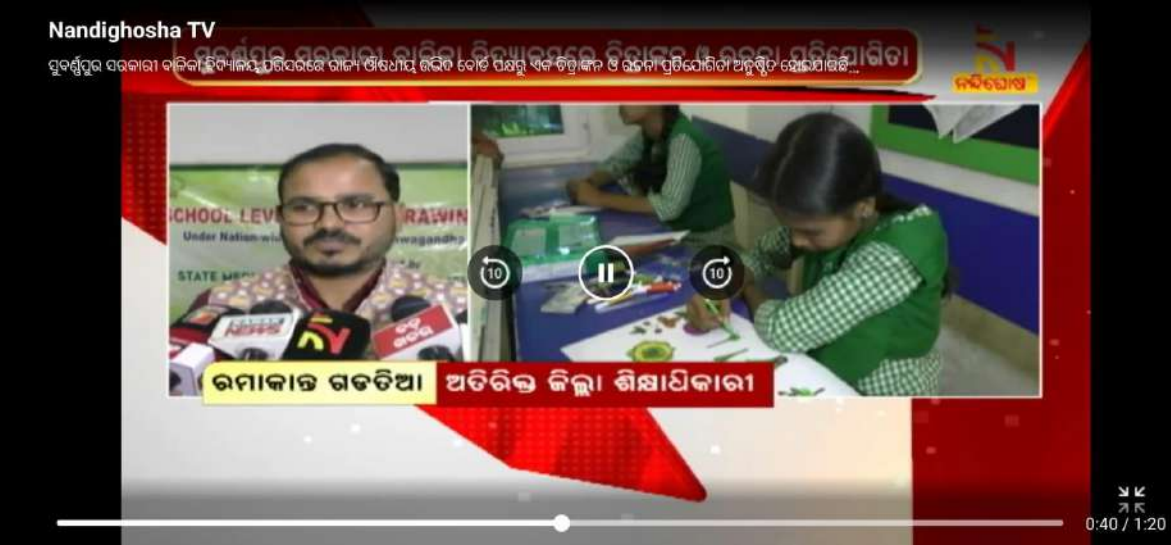
ସୋନପୁର, ୯।୧୧ (ଇମିସ): ଗୁରୁବାର ରାଜ୍ୟ ଔଷଧୀୟ ଉଦ୍ଭିଦ ପରିଷଦ ଏବଂ ଜଳଜାଲ, ପରିବେଶ ଓ ଜଳବାୟୁ ପରିବର୍ତ୍ତନ ବିଭାଗ ପକ୍ଷରୁ ସୋନପୁର ସରକାରୀ ବାଳିକା ହାଇସ୍କୁଲରେ ଅଣୁଷ୍ଠିତ ହୋଇଥିଲା ଏଥିରେ ଶିବଭୂଜା

ପ୍ରଥମ, ସୋନପୁର ବାଳିକା ହାଇସ୍କୁଲର ଶ୍ରୀୟା ଦାଶ ଦ୍ୱିତୀୟ, ବିଶିପଡ଼ା ପରମେଶ୍ୱର ହାଇସ୍କୁଲର ପ୍ରୀତି ମୁଖୀ ତୃତୀୟ ସ୍ଥାନ ଅଧିକାର କରିଥିଲେ। ସେହିପରି ପ୍ରବନ୍ଧରେ ବୀରମହାରାଜପୁର ବାଳିକା ହାଇସ୍କୁଲର ସରସ୍ୱତୀ ଯଥାନ୍ତ ପ୍ରଥମ, ସୋନପୁର ବାଳିକା ହାଇସ୍କୁଲର ମୋନାଲିକା ସାହୁ ଦ୍ୱିତୀୟ, ଶିବଭୂଜା ସତ୍ୟନାରାୟଣ ହାଇସ୍କୁଲର କୋୟଲ ଦାଶ ତୃତୀୟ ସ୍ଥାନ ଅଧିକାର କରିଥିଲେ। ପୁରସ୍କାର ବିତରଣ କାର୍ଯ୍ୟକ୍ରମରେ ରାଜ୍ୟ ଔଷଧୀୟ ଉଦ୍ଭିଦ



ସତ୍ୟନାରାୟଣ ହାଇସ୍କୁଲ, ଭୁଞ୍ଜୁରିପାଲି କୁଶଳେଶ୍ୱର ହାଇସ୍କୁଲ, ସୋନପୁର ସରକାରୀ ବାଳିକା ହାଇସ୍କୁଲ, ବିଶିପଡ଼ା ପରମେଶ୍ୱର ହାଇସ୍କୁଲ, ବୀରମହାରାଜପୁର ପଞ୍ଚାୟତ ସମିତି ସରକାରୀ ବାଳିକା ହାଇସ୍କୁଲର ୫୦ ଜଣ ଛାତ୍ରଛାତ୍ରୀ ଅଂଶଗ୍ରହଣ କରିଥିଲେ। ଚିତ୍ରାଙ୍କନରେ ବୀରମହାରାଜପୁର ବାଳିକା ହାଇସ୍କୁଲର ପ୍ରିୟଦର୍ଶିନୀ ମେହେର

ପରିଷଦ ମୁଖ୍ୟ କାର୍ଯ୍ୟ ନିର୍ବାହୀ ସୁଦୀପ ନାୟକ (ଆଇଏଏଏସ), ଅତିରିକ୍ତ ଜିଲ୍ଲା ଶିକ୍ଷା ଅଧିକାରୀ ଡ. ରାଧାକାନ୍ତ ଗଡ଼ଡ଼ିଆ ଅତିଥି ଭାବରେ ଯୋଗ ଦେଇ କୃତୀ ପ୍ରତିଯୋଗୀମାନଙ୍କୁ ପୁରସ୍କୃତ କରିଥିଲେ। ଏଥିରେ ଡ. ଗଗନବିହାରୀ ସାହୁ, ଇପସିଡ଼ ପରିଡ଼ା, ଆଦିତ୍ୟ ମହାନ୍ତି, ଆଲୋକ ଶ୍ରୀରାମନ ପ୍ରମୁଖ ସହଯୋଗ କରିଥିଲେ।



State Level Kalinga Herbal Fair:

During this Financial Year 2023-24 the 16th State Level Kalinga Herbal Fair was organized from 5th December 2023 to 11th December 2023. In this unique state level event Ayurvedic Manufacturing Companies like Dabur India Ltd., Emami Ltd., Kotakal, Kerla etc., Traditional Healers across the state, SHGs etc. participated in 130 nos of stalls.

The event was inaugurated by the Honorable Cabinet Minister S. Pradeep Kumar Amat, Forest, Environment and Climate Change, Panchayati Raj and Information & Public Relations along with Honorable Additional Chief Secretary S. Satyabrata Sahu,

Forest, Environment and Climate Change, S. Debidatta Biswal, P.C.C.F, HoFF, Dept. of Forest, Environment & Climate Change and S. Sudeep Nayak, IFS, Chief Executive of State Medicinal Plants Board, Odisha. During this auspicious occasion one Calendar depicting the importance of Medicinal Plants in day to day lives



and on Research Publication show casing the use of Medicinal Plants by the Tribes of Odisha published by State Medicinal Plants Board, Odisha by the gracious hands of the guests.

During this 7 days' long event, 4 nos of workshops for Students of Rajdhani College, BJB College, Dhenkanal College, Botany Dept. of Utkal

University, Forestry Dept. of O.U.A.T., students from Ayurvedic and Homeopathy Colleges like Dr. Abin Chandra Homeopathy College and Hospital, Bhubaneswar, Gopabandhu Ayurvedic Mahavidyalay, Puri and Sri Sri College of Ayurvedic Science and Research Hospital, Cuttack were done on various topics related to Medicinal Plants. Another workshop for Senior Citizen's on Geriatric Care was also organized during this fare.

Another knowledge exchange and Training Programme on Good Manufacturing Practices of simple Ayurvedic Products was also organized for selected Traditional Healers participated in this state level fair.

The Closing Ceremony was held on the evening of 11th December 2023 in the gracious presence of S. Dr. Kunja Bihari Satapathy, Retd. Professor & HoD, Botany and S. Sudeep Nayak, IFS, Chief Executive, State Medicinal Plants



Board, Odisha. During this auspicious occasion one Calendar depicting the importance of Medicinal Plants in day to day lives

Board, Odisha. During the 16th State Level Kalinga Herbal Fair total trade volume had reached a new height by crossing Rupees 70 Lakhs which is 40% higher than the previous year.







Regional Level Kalinga Herbal Fair:

During this Financial Year 2023-24, the State Medicinal Plants Board, Odisha had decided to organize Regional Level Kalinga Herbal Fairs at Rourkela, Phulbani, Keonjhar and Bolangir through the DFOs. The Regional Level Kalinga Herbal Fair at Rourkela was organized from 4th January to 8th January 2024. In this regional level fair Traditional Healers from various districts, SHGs and grass root level Organizations associated with the



Dept. of Forest had participated in 75 nos of stalls. Similarly, the Regional Level Kalinga Herbal Fair at Phulbani was organized from 10th January to 14th January 2024. In this regional level fair Traditional Healers from various districts and SHGs had participated in 54 nos of stalls. The remaining 2 nos of Regional Level Kalinga Herbal Fairs, one each at Keonjhar and Bolangir will be held during the month of February 2024.



Regional Level Workshop for Popularizing Cultivation of Medicinal Plants:

In order to popularize the cultivation of Medicinal Plants among the Farmers and to preserve the Medicinal Plant species in its natural habitat, the State Medicinal Plants Board, Odisha has been conducting Regional Level workshops in association with Farmer groups, FPOs and SHGs. In this regard one number of Awareness Workshop was organized at Khairitkira of Subarnapur district by Kshetrapal FPO on 15th December 2023. In this meeting 30 No of Farmers had attended the meeting. The CE, SMPB, Odisha S. Sudeep Nayak inaugurated the meeting and in his speech emphasized the importance of Medicinal plant cultivation in the state.



Then the Consultants of SMPB detailed the economic importance of some major Medicinal Plants that can be cultivated in Subarnapur district.



On the same day at Baunsuni village of Kantamal Block of Boudh district we had another meeting with 17 nos of the SHG members of 3 different SHGs on the importance of Medicinal plant cultivation where the SHG members were encouraged by the CE, SMPB, Odisha to shift their focus on Medicinal Plant cultivation rather than traditional cultivation practices as Medicinal Plant cultivation is much profitable and has great market potential.

CAMPAIGN ON PROMOTION OF CONSERVATION OF RET SPECIES IN ODISHA **(College Level Debate & Drawing Competition on Conservation of 41 RET Species of Odisha)**

Under Campaign on Promotion of Conservation of RET Species in Odisha, State Medicinal Plants Board, Odisha decided to conduct College Level Awareness Campaigns to promote Conservation and Cultivation across the state and it was decided to conduct College Level Debate and Drawing competitions in Dr. Abhin Chandra Homeopathy Medical College and Hospital, Bhubaneswar, Odisha.



The registration of College Level Debate and Drawing Competition under promotion of Conservation and Cultivation across the state at Dr. Abhin Chandra Homeopathy Medical College and Hospital, Bhubaneswar, Odisha on

7th February 2024 at 10:30 AM. The valuation was done by independent jury members and result was declared in the above 2 events separately by different Jury Teachers. At 1:30 PM the



presentation giving ceremony was conducted in presence of the Principal, Dr. Abhin Chandra Homeopathy Medical College and Hospital and other faculty members.

NATION-WIDE CAMPAIGN ON ASHWAGANDHA
(District wise School Level Essay Writing & Drawing Competition on Ashwagandha as Health Promoter)

Under Nation-wide Campaign on Ashwagandha, State Medicinal Plants Board, Odisha decided to conduct School Level Awareness Campaigns to promote Ashwagandha consumption and cultivation across the state and it was decided to conduct School Level Essay Writing and Drawing competitions in Angul district of Odisha.



The District Level Awareness Campaign was planned for Angul district involving 50 no of students from 5 no of High Schools. The event was organized at Hulusisingh High School, Hulusisingh of Angul district on 9th February 2024 where 25 No of students had participated in Essay Writing Competition and 25 nos had participated in Drawing Competition from these 5 Nos of Schools pre-selected by the

District Education Officer, Angul. The lists of participating schools are as follows.

Sl. No.	Name of Schools	Address	Total No of Participants	Event wise Participation
1	Govt. Girls' High School	Angul	10	Essay – 5 Drawing – 5
2	Hulusingha High School	Hulusingha, Angul	10	Essay – 5 Drawing – 5
3	Angul Govt. High School	Angul	10	Essay – 5

				Drawing – 5
4	Kumanda, Jarasingha Nodal High School	Jarasingha	8	Essay – 5 Drawing – 3
5	Town High School	Angul	10	Essay – 5 Drawing – 5

The registration of School Level Essay Writing and Drawing Competition under Nationwide Ashwagandha Campaign at Hularisingh High School, Hularisingh done. Then valuation was done by independent jury members who are Retd. Headmasters of various High Schools and result was declared in the above 2 events separately by different Jury Teachers.

Event wise list of Winners is enclosed in the following table.



Sl. No	Name of the Event	Name of the Student	Name of the School	Position Held
1	Essay Writing Competition	Sthiti Pranjya Swain	Govt. High School, Angul	1 st
2		Pravasika Swain	Kumanda Jarasingha Nodal High School, Kumanda, Jarasingha, Angul	2 nd
3		Ranu Parichha	Hulursingha Govt. High School, Hulursingha, Angul	3 rd
4	Drawing Competition	Nirlipta Sahu	Govt. Girl's High School, Angul	1 st
5		Sonam Swastika Sahu	Kumanda Jarasingha Nodal High School, Kumanda, Jarasingha, Angul	2 nd
6		Ashish Dhar	Govt. High School, Angul	3 rd

In this event all the participants were presented with one Certificate of Participation and a School Bag as appreciation each. The student getting 1st Position in each event was presented with One Certificate of appreciation, one Shield and one Smart Watch. The student getting 2nd Position in each event was presented with One Certificate of appreciation, one Shield and one hot and cold Tiffin Box and the student getting 3rd Position in each event was presented with One Certificate of appreciation,



one Shield and one hot and cold Water Bottle

A BRIEF REPORT ON EXPOSURE VISIT BY FARMERS TO STATE FOREST RESEARCH INSTITUTE, JABALPUR, MADHYA PRADESH

On 19th February 2024 at 8:15 PM all the participants Boarded Train at Bhubaneswar Railway Station for Jabalpur reached Jabalpur on 21st February 2024 at 6:45 AM. Mr. Kundan Sharma, Representative of SFRI, Jabalpur welcomed all the participants at the Station and led the



team to SFRI Campus, Jabalpur.

, Sj. Pradeep Vasudeva, IFS, Director, SFRI, Jabalpur inaugurated the programme. It was followed by the introductory address by Director, SFR I, Jabalpur. Then Dr. Uday Homkar, Sr. Research Officer, SFRI, Jabalpur presented a detailed presentation on 84 no of species of Medicinal Plants cultivated across various agro-climatic zones..

At 9 AM on 22nd February 2024, 1st visit was conducted to Kondam Nursery, outskirts of Jabalpur City.

This Nursery deals with Jarbera Flowering Plant round the year in 2.5 Acre of land by using modern Greenhouse that uses sensors and automated control to detect and actively maintain an ideal growing environment with equipment such as heaters, ventilation, lighting, irrigation, etc. Upon interaction with the farmers, it was found that the Jarbera Flowers were being sold at Jabalpur during the wedding seasons @ Rs.20.00 a Piece and round the year they are sending their produces at Pune @ Rs.6.00 to Rs.10.00 a Piece. On this occasion Ashok (*Saraka indica*) was planted



across the boundaries of this nursery by all participants.



At 2 PM on 22nd February 2024, 2nd visit was conducted to Kundam Nursery, Kundam village. This Nursery deals with Rose Flowering Plant round the year in 2.5 Acre of land by using modern Greenhouse that uses sensors and automated control to detect and actively maintain an ideal growing

On 23rd February 2024 the visit was to Shri Mukund Biotech-DBT Certified Tissue Culture Lab, Majhitha Village, Bhedaghat, Jabalpur.

On 24th February 2024 the visit was to Borlaug Institute for South Asia (Bisa), Lakhan Wara, Madhya Pradesh.

The next visit was to Agadyati Herbs & Food, Indraprasth, Hinota, Kundam, Jabalpur, a national award-winning startup dedicated to empowering Indian farmers to cultivate organic medicinal herbs and plants, .



On 25th February 2024 the visit was to Nibhawara Village of Panagar Block of Jabalpur. The name of the farmer visited was Kishan Kewat. This farmer has cultivated Satavari of both Indian and Nepali varieties under mixed cropping mode along with vegetables, leafy vegetables and Sarpagandha in 5 acres of land. In 5 acres of land he monocropped Nepali

Satavari and in 3 acres Ashwagandha. The farmer marketed all his products at Laknow Mandi and his annual Turnover was 20 Lakhs for the past years. For cultivation of Medicinal plants he has procured various machineries and primary processing tools. He also sells seeds to various agencies. Currently he has a stoke pile of more than 1.5 Qtls of Ashwagandha seeds, 1 Qtl of Satavari Seeds and 20 KG of Sarpagandha Seeds.





During the afternoon of the same day the closing programme of the programme was done in presence of the Director, SFRI, Jabalpur, Dy. Director, SFRI, Jabalpur and other Officials of SFRI. A Certificate distribution ceremony was conducted during this ceremony. After completion of this event all the participants visited to the Nurseries of SFRI.

At the evening left for Jabalpur Railway

Station and boarded Train for Bhubaneswar and reached Bhubaneswar on 27th February 2024 at 9:45 AM.



Chief Executive

State Medicinal Plants Board, Odisha